

MAKING A SELECTION USING THE PAINT BRUSH AND QUICK MASK MODE

There are many ways to make a selection on an image. The following is one example using the **Brush Tool** and **Quick Mask Mode**.

1. Use the lasso tool to draw loosely around the portion of the image you want to select. (Figure 1)
2. Enter Quick Mask Mode by clicking on the button below and to the right of the color picker. (Figure 2) The first time you do this, double click on the Quick Mask Mode button and make sure it is set to Color Indicates Masked Areas and the opacity is at 100%.
3. Using the Brush Tool, trace around the part of the image you want to select. (Figure 3) It is a good idea to zoom in so you can see the edges of the desired selection better. Figure 3 shows an image at 500% using a 5-pixel brush.
4. Once step three is completed, fill in the area between the outline of the image and the rest of the image using a larger brush if you wish. (Figure 4)
5. Return to standard mode by clicking on the button to the left of the Quick Mask Mode button. This will give you the “marching ants” to show you the selection. (Figure 5; page 2) From here you can drag and drop the selection onto another layer, create a clipping path or apply whatever effect you wanted to the selection.

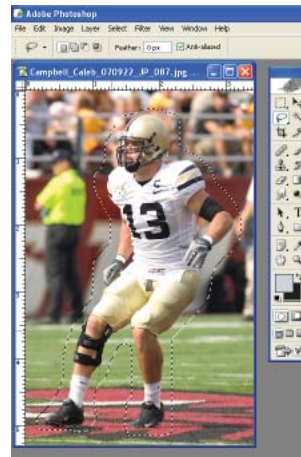


Figure 1

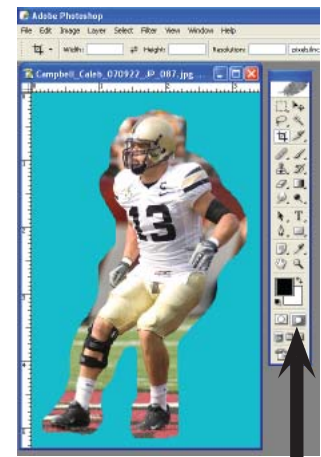


Figure 2

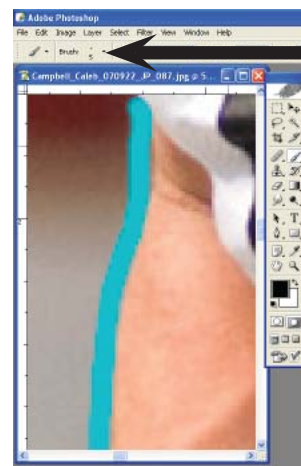


Figure 3

Define brush diameter and opacity here.

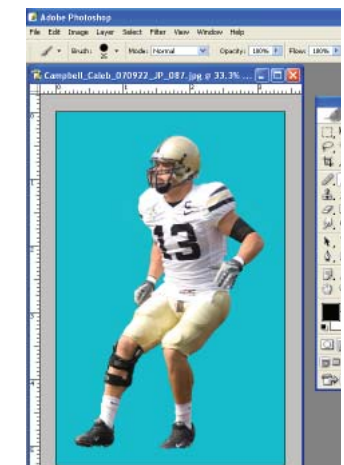


Figure 4

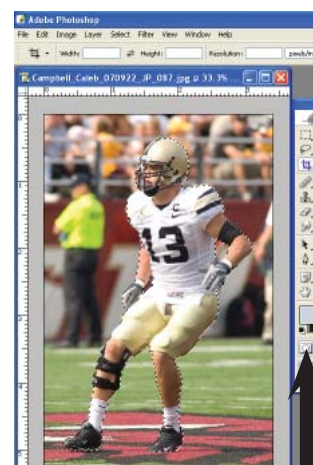


Figure 5



Figure 6

CLIPPING PATHS

- Clipping paths can be used to define what part of an image can be imported into your desktop publishing program. For example, a cutout of a player without the background.
1. Once you have defined a selection, open the **Paths** palette. It can be found in the **Windows** menu.
 2. Click on the arrow in the upper-right portion of the palette and choose **Make Work Path**. A dialog box asking to define the tolerance will come up. Keep the value at 0.5 and press enter.
 3. The defined path will now appear in the palette labeled Work Path. Double click on the path in the palette to rename it. The default name is Path 1, but you can call it whatever you like.
 4. Go back into the menu by clicking on the arrow and choose **Clipping Path**. A dialog box will appear asking you which path you would like to make the clipping path. Choose the one that you just made (either Path 1 or the name you gave it).
 5. Save your document.
 6. Place the image into your desktop publishing program. Only the defined clipping path will appear. (Figure 6;)